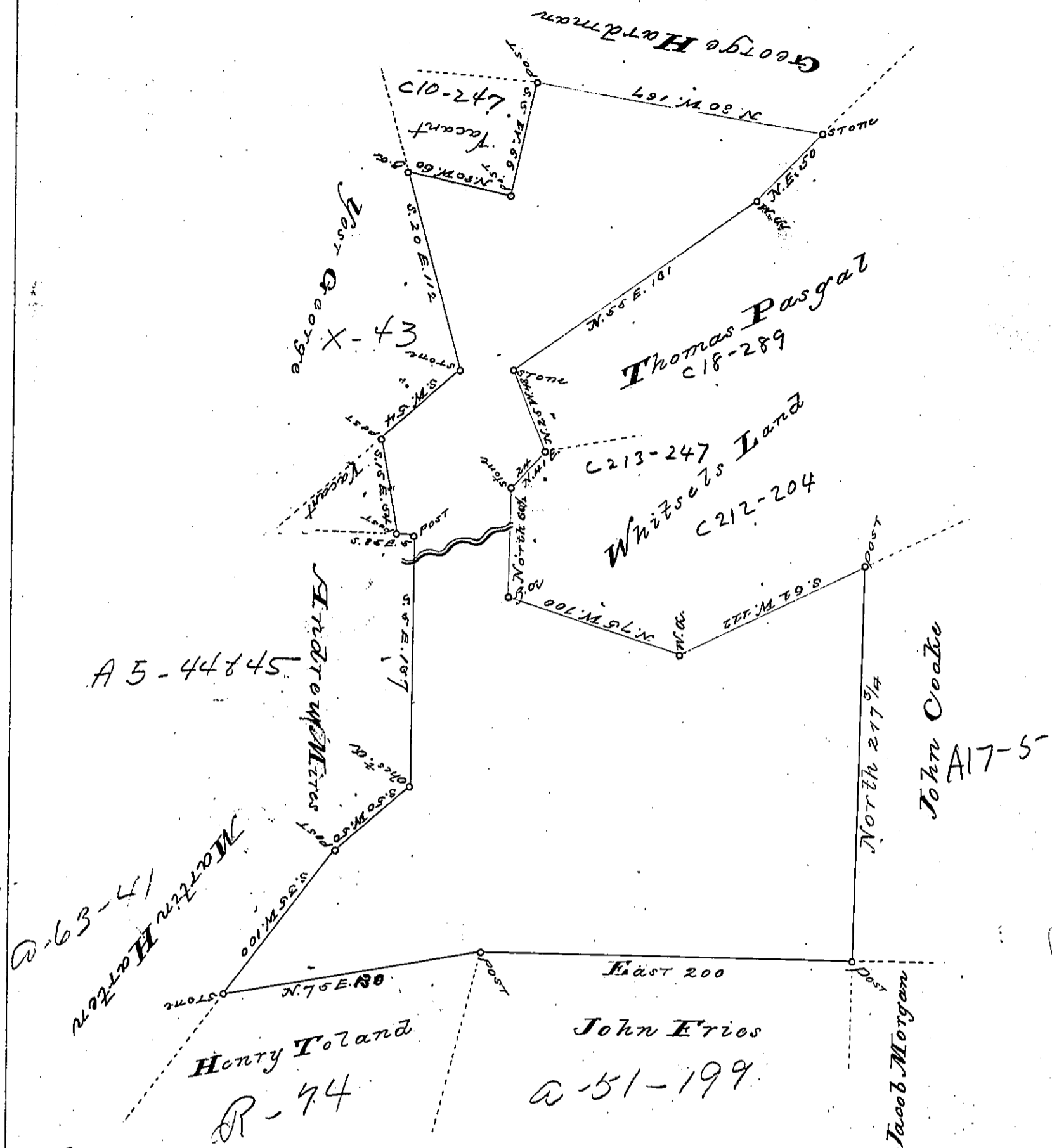


C 74-148



By Virtue of a Warrant dated the 13th August 1793
 Surveyed the 26th August 1793 to Robert Shaw the above described
 tract of Land situate on Lizard Creek in Penn Township North-
 ampton County Containing Four hundred and thirty nine
 Acres one hundred and thirty eight perches & the allowances
 of six up. Cont &c.

To Daniel Brodhead Esquire }
 Surveyor General } of Geo. Palmer D.C.

IN TESTIMONY that the above is a copy of the original remaining on file in the
 Department of Internal Affairs of Pennsylvania, made con-
 formably to an Act of Assembly approved the 16th day of
 February, 1833, I have hereunto set my Hand and caused
 the Seal of said Department to be affixed at Harrisburg, this

— Seventeenth day of October — 1892.

Geo. J. Steward
 Secretary of Internal Affairs

